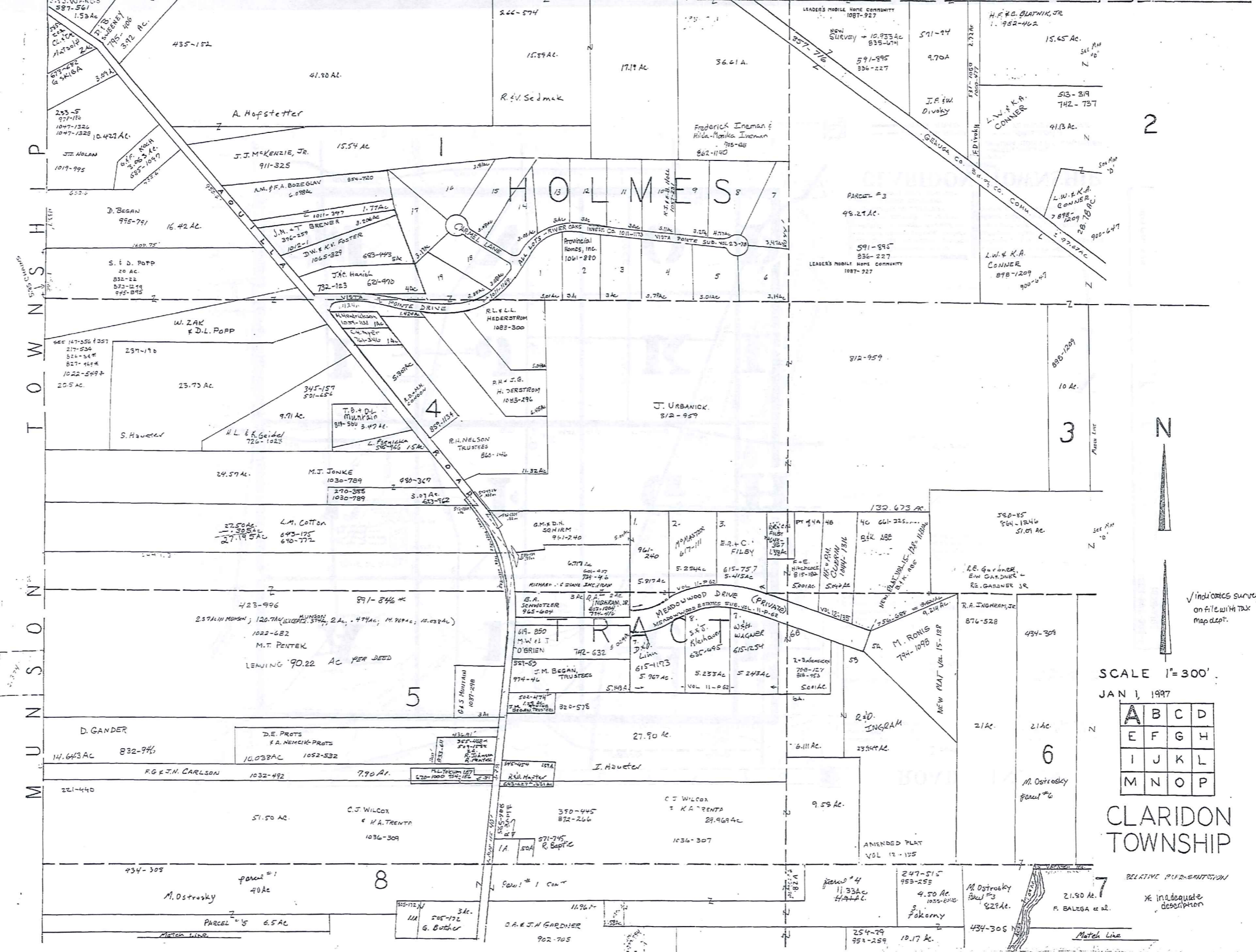




H A M B D E N T O W N S H I P



1-800-345-7334  
TWM/REDI  
SCALE IN 1/100 OF AN INCH

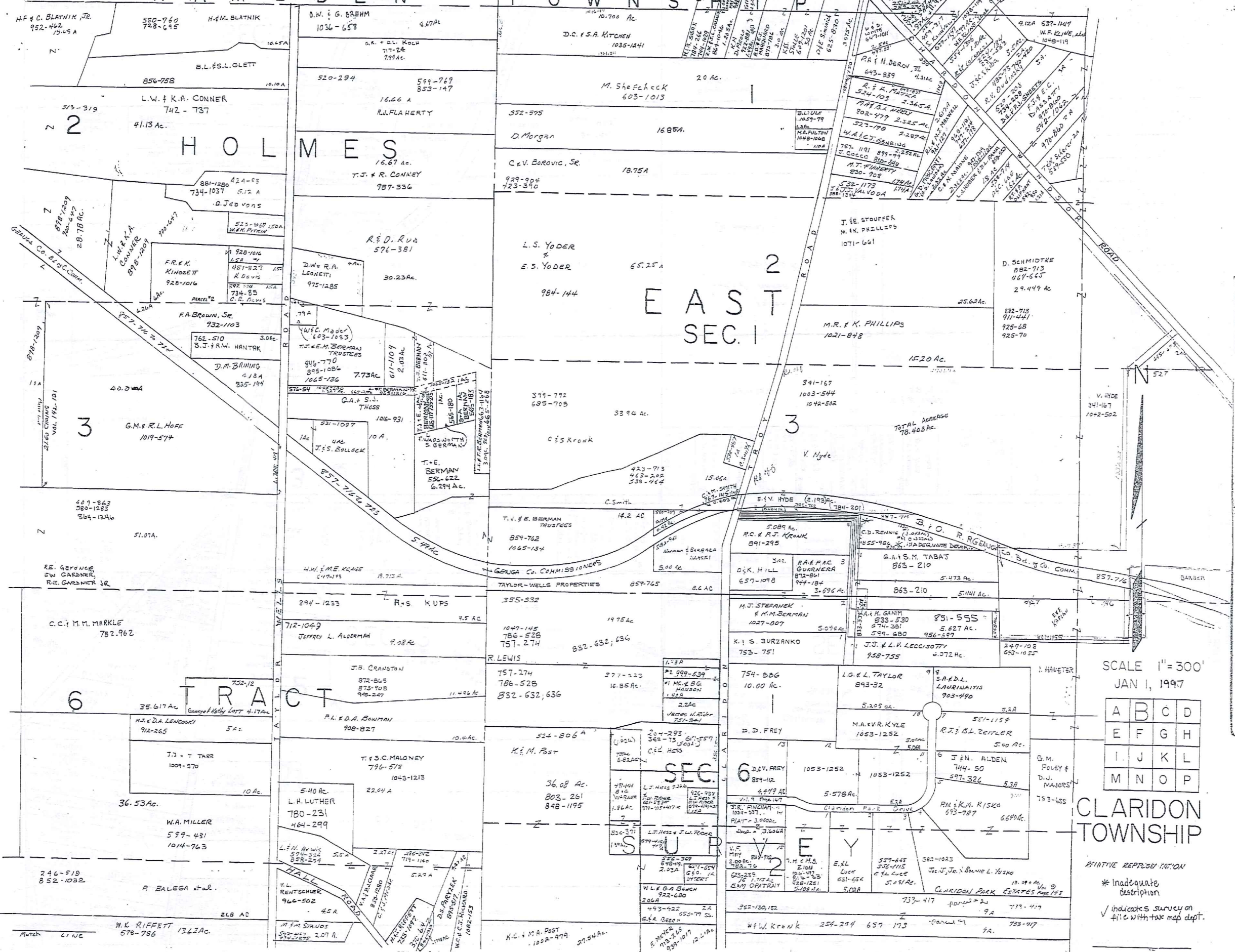
SCALE 1" = 300'  
JAN 1, 1997

A	B	C	D
E	F	G	H
I	J	K	L
M	N	O	P

CLARIDON TOWNSHIP

RELATIVE REFERENCE  
\* inadequate description

H A M B U R G T O W N S H I P



1-800-345-7334

227

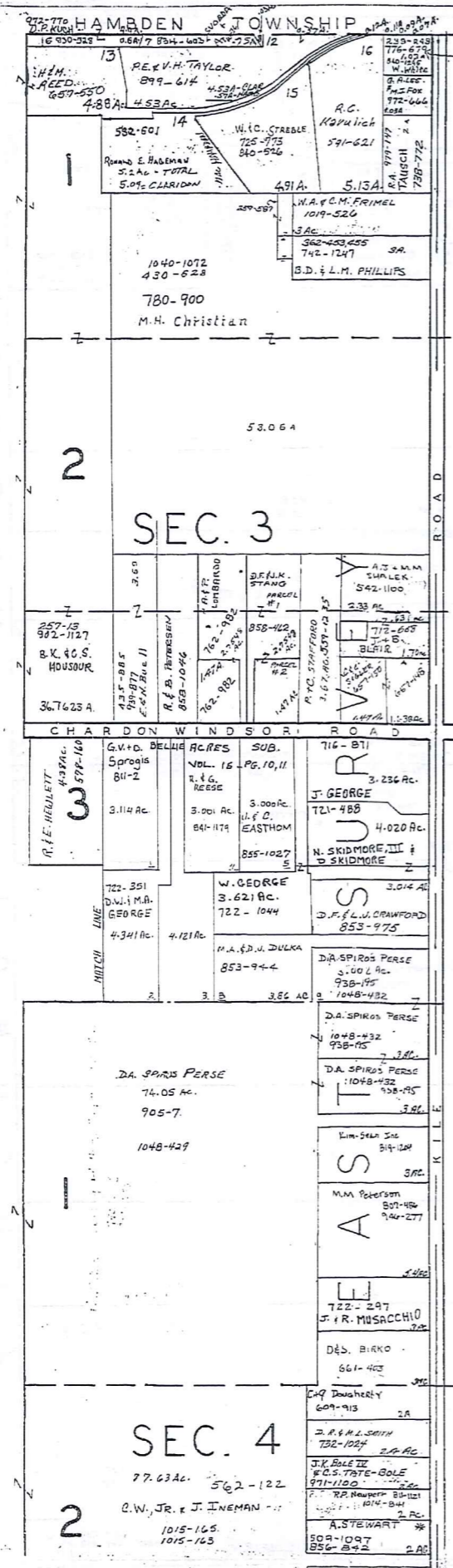
SCALE 1" = 300'  
JAN 1, 1997

A	B	C	D
E	F	G	H
I	J	K	L
M	N	O	P

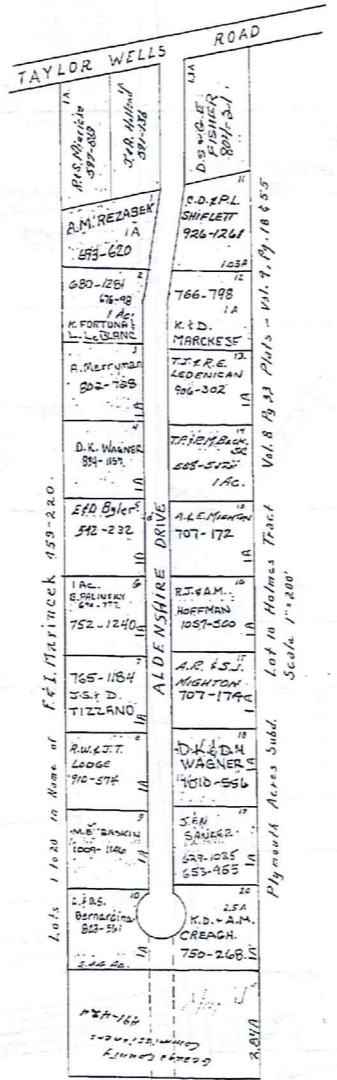
CLARIDON TOWNSHIP

PRINTED REPRODUCTION  
\* Inadequate description  
✓ indicates survey on file with tax map dept.





T O W N S H I P  
S U B U R G I T O W N S H I P



Lots 1 to 20 in name of F.E. MARRINCK 959-220.

Lot to Holmes Tract Vol. 8 Pg. 31 Plus - Vol. 7, Pg. 18 & 55  
Plymouth Acres Subd. Scale 1"=200'



SCALE 1"=300'

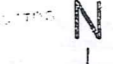
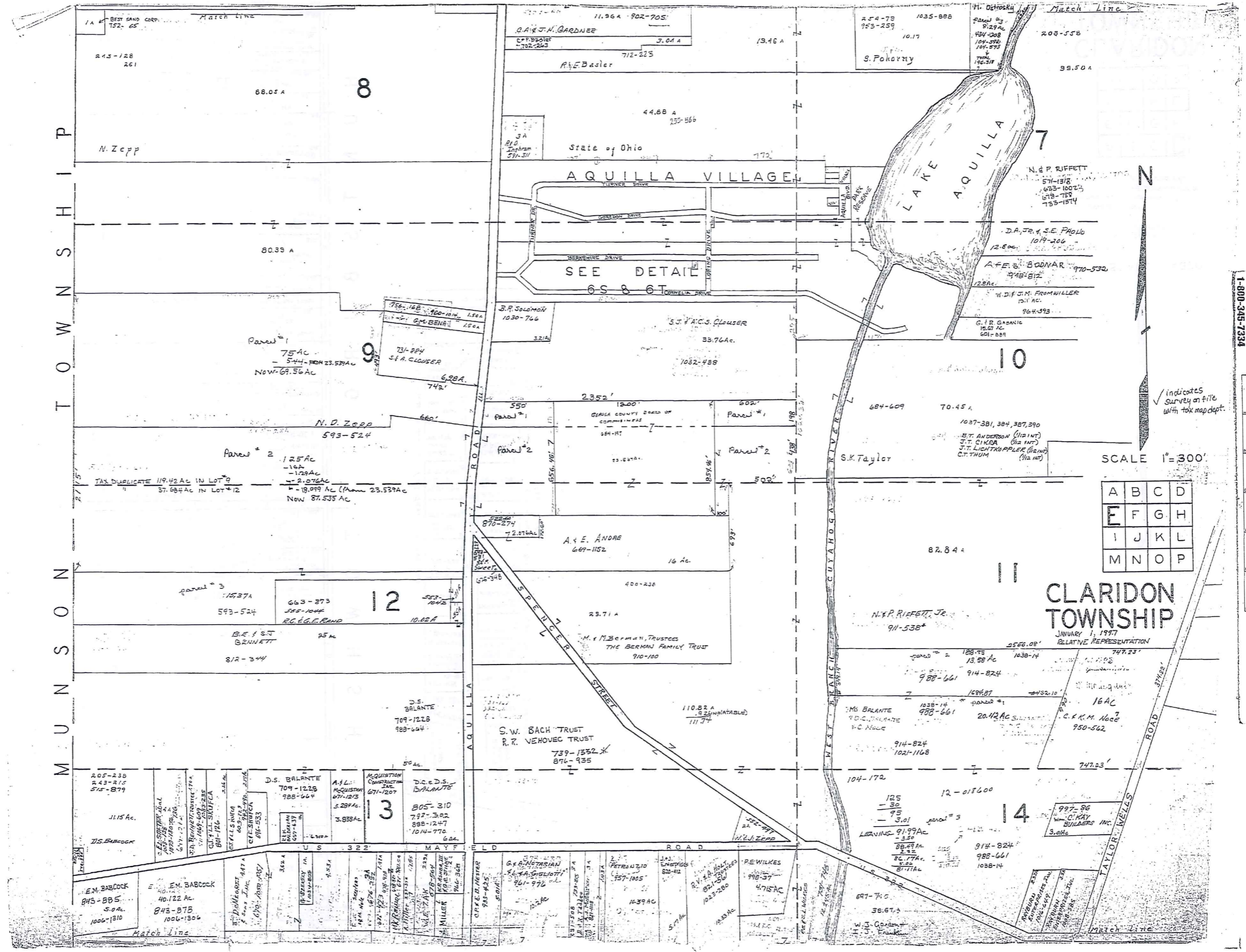
\* Inadequate Description  
JANUARY 6, 1997  
RELATIVE REPRESENTATION  
✓ Indicates survey on file with tax map & dept.

A	B	C	D
E	F	G	H
I	J	K	L
M	N	O	P

**CLARIDON TOWNSHIP**

TRIM-REDI  
1-800-345-7334  
SCALE IN 1/16" OR AN INCH

T O W N S H I P  
M U N I C I P A L



✓ indicates survey on file with tax map dept.

SCALE 1"=300'

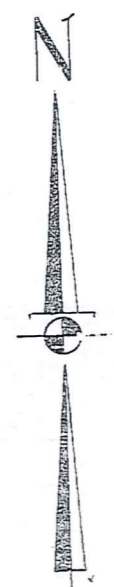
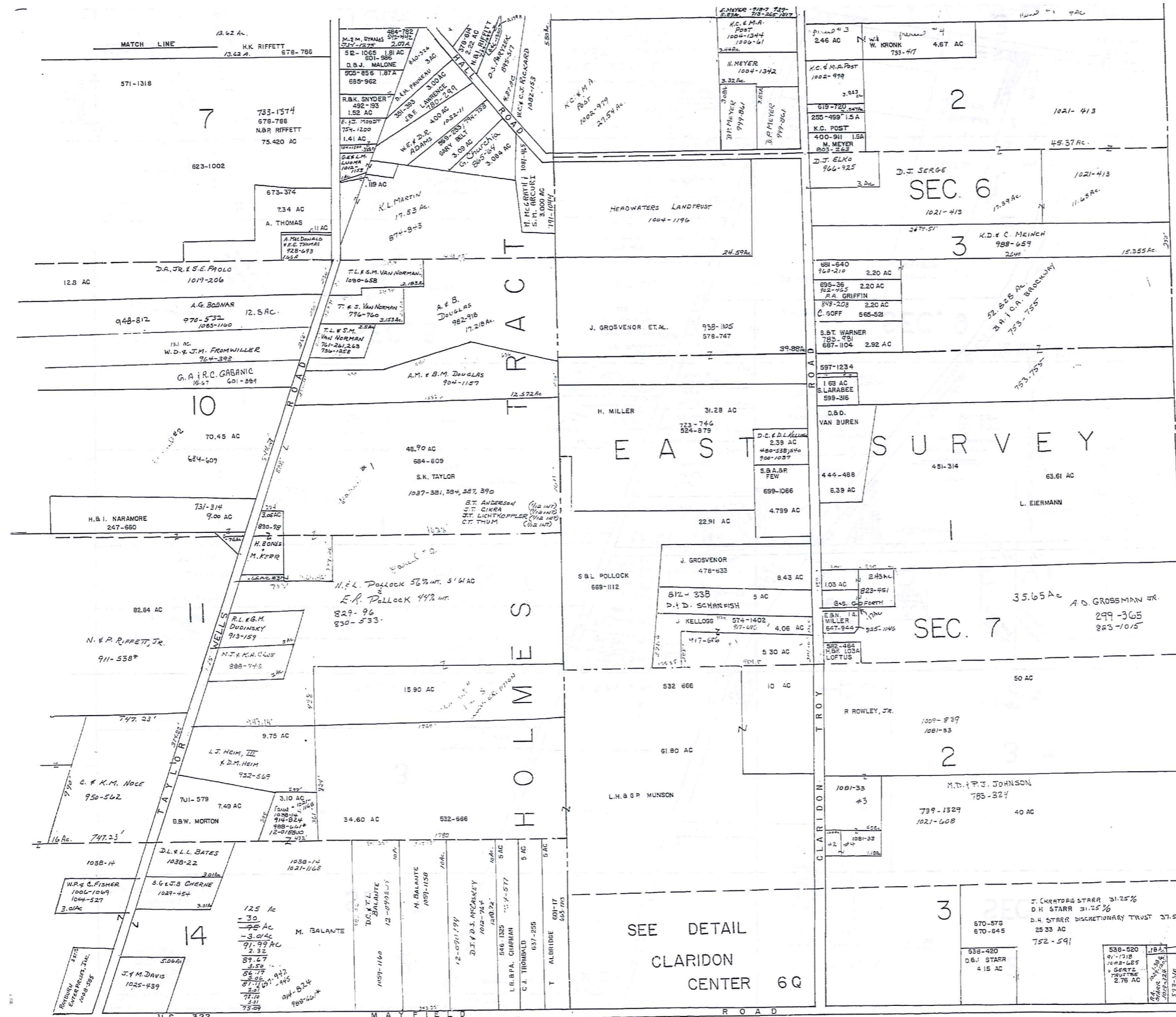
A	B	C	D
E	F	G	H
I	J	K	L
M	N	O	P

# CLARIDON TOWNSHIP

JANUARY 1, 1997  
RELATIVE REPRESENTATION

TW-REDI  
1-800-345-7334





TOWN-READ  
 1-800-345-7334  
 SCALE IN 1/10 OF AN INCH

A	B	C	D
E	F	G	H
I	J	K	L
M	N	O	P

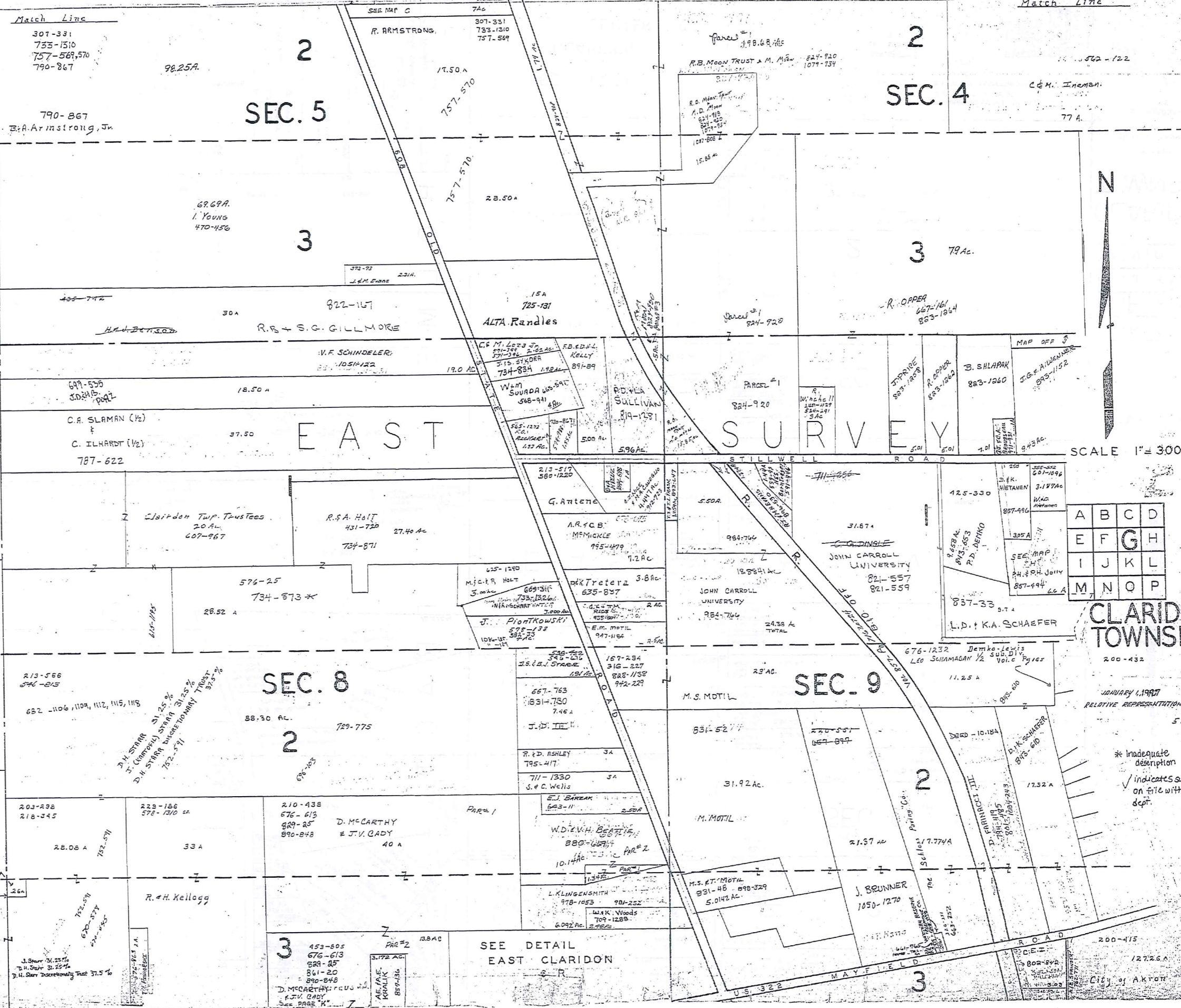
**CLARIDON TOWNSHIP**

JANUARY 1, 1997  
 RELATIVE REPRESENTATION

\* Inadequate description

✓ indicates survey on file with tax map dept.

SEE DETAIL  
 CLARIDON CENTER 6Q



Match Line  
307-331  
733-1310  
757-569,570  
790-867  
B.A. Armstrong, Jr.

SEC. 5

SEC. 4

SEC. 3

SEC. 3

EAST

SURVEY

SCALE 1" = 300'

CLARIDON TOWNSHIP

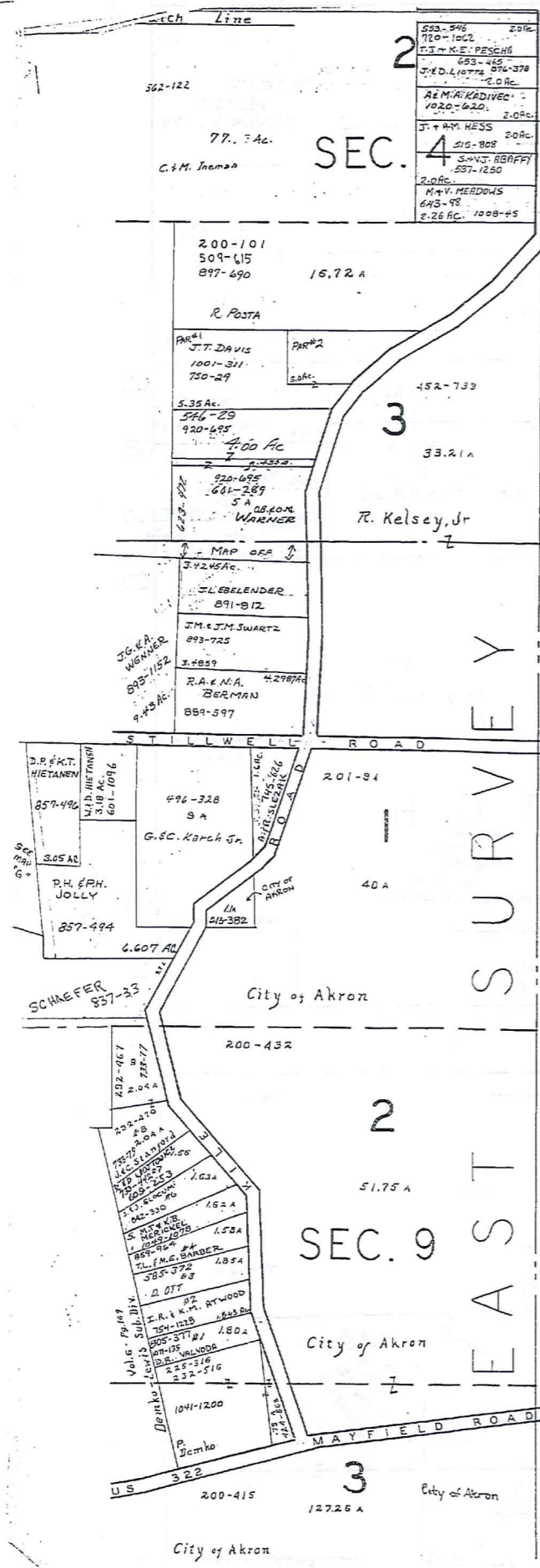
JANUARY 1, 1997  
RELATIVE REPRESENTATION

\* Inadequate description  
✓ indicates survey on file with tax map dept.

City of Akron

A	B	C	D
E	F	G	H
I	J	K	L
M	N	O	P

TOWN-REID  
 1-800-345-7334  
 SCALE IN 1/4 OF AN INCH



EAST HUNT TOWNSHIP SURVEY

TOWN-REDU  
1-800-345-7334  
SCALE IN 1/100 OF AN INCH



SCALE 1"=300'

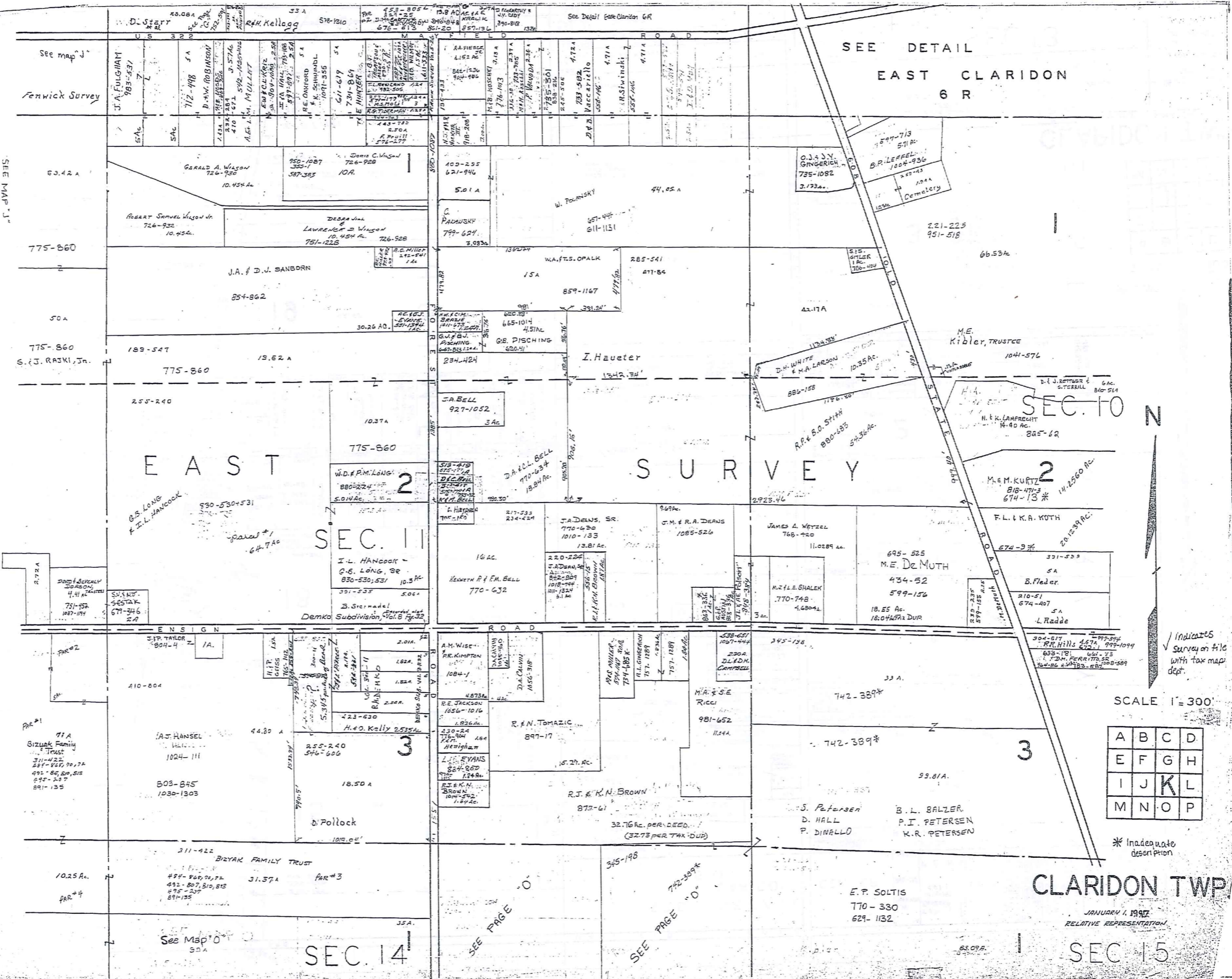
JANUARY 1, 1997  
RELATIVE REPRESENTATION  
\* Inadequate description  
✓ indicates survey on file with tax map dept.

A	B	C	D
E	F	G	H
I	J	K	L
M	N	O	P

CLARIDON TOWNSHIP







SEE DETAIL  
EAST CLARIDON  
6 R

E A S T

S U R V E Y

SEC. 10

SEC. 11

3

SEC. 14

CLARIDON TWP

JANUARY 1, 1937  
RELATIVE REPRESENTATION

SEC. 15

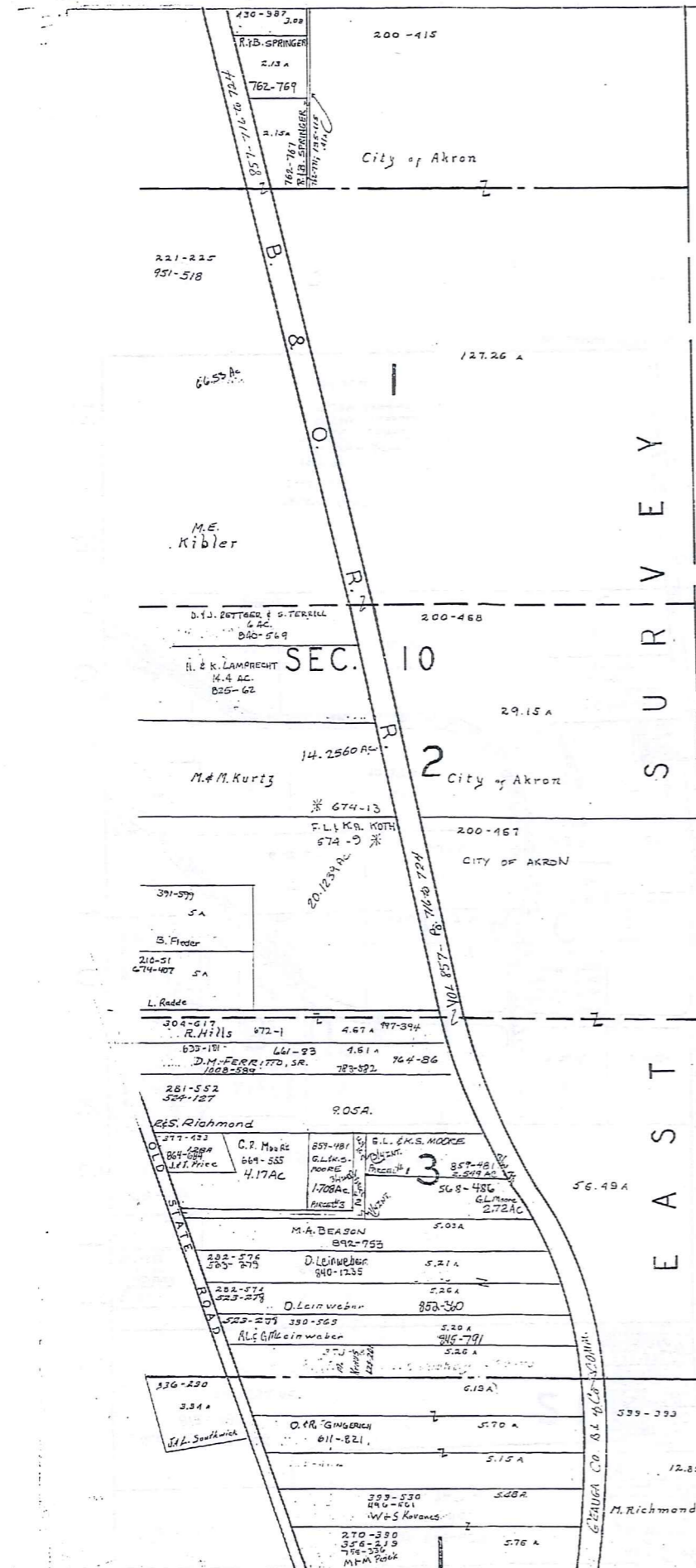
A	B	C	D
E	F	G	H
I	J	K	L
M	N	O	P

\* Inadequate description

Indicates Survey on file with tax map dept.

SCALE 1" = 300'

TRW-RED  
 1-800-345-7334  
 SCALE IN 1/16" OF AN INCH



H U N T S B U R G T O W N S H I P  
 S U R V E Y  
 E A S T



✓ indicates survey on file with tax map dept.  
 \* inadequate description

SCALE 1" = 300'

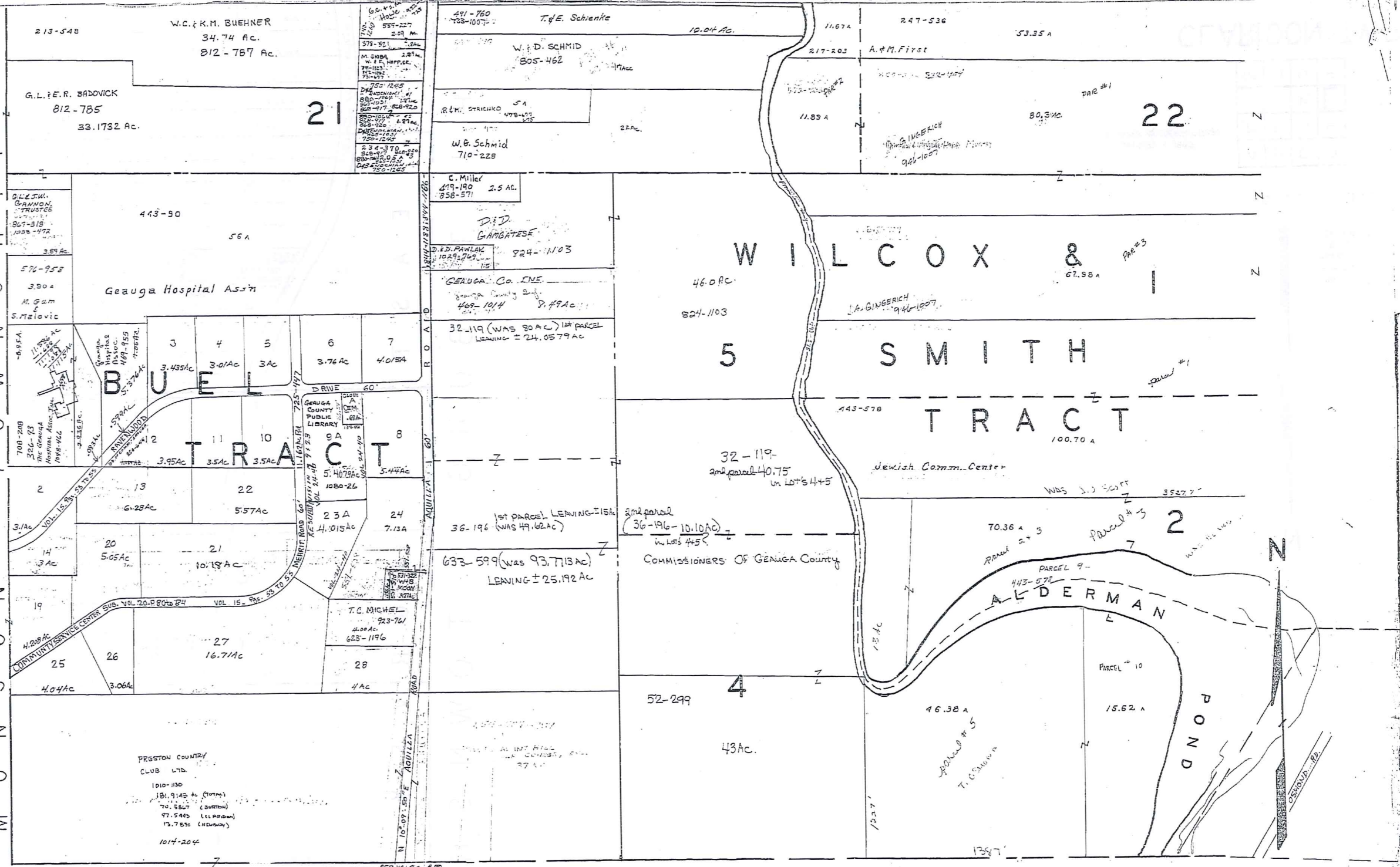
JANUARY 4, 1997  
RELATIVE REPRESENTATION

A	B	C	D
E	F	G	H
I	J	K	L
M	N	O	P

CLARIDON TWP.

TWP-RED-1  
 1-800-345-7334  
 SCALE IN 1/4 IN. OF AN INCH

M  
U  
N  
I  
C  
I  
P  
A  
L  
T  
O  
W  
N  
S  
H  
I  
P



BURTON TOWNSHIP

SCALE 1" = 300'

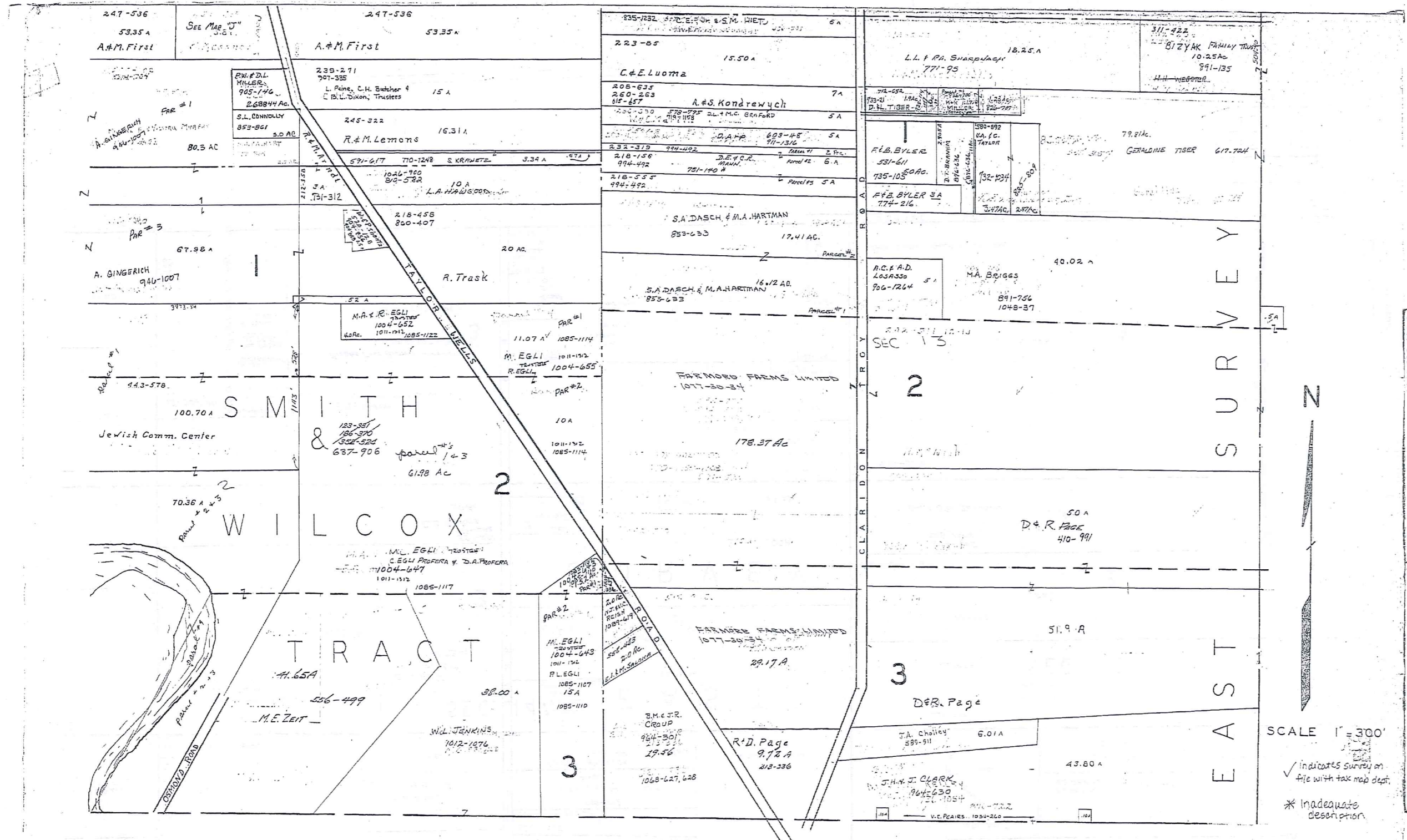
JANUARY 1, 1908  
RELATIVE REPRESENTATION

\* Inadequate description  
 ✓ indicates survey on file with tax map dept.

A	B	C	D
E	F	G	H
I	J	K	L
M	N	O	P

CLARIDON TWP

TRW-REDI  
 1-800-345-7334  
 SCALE IN 1/8" OR RAIR HIGH



BURTON

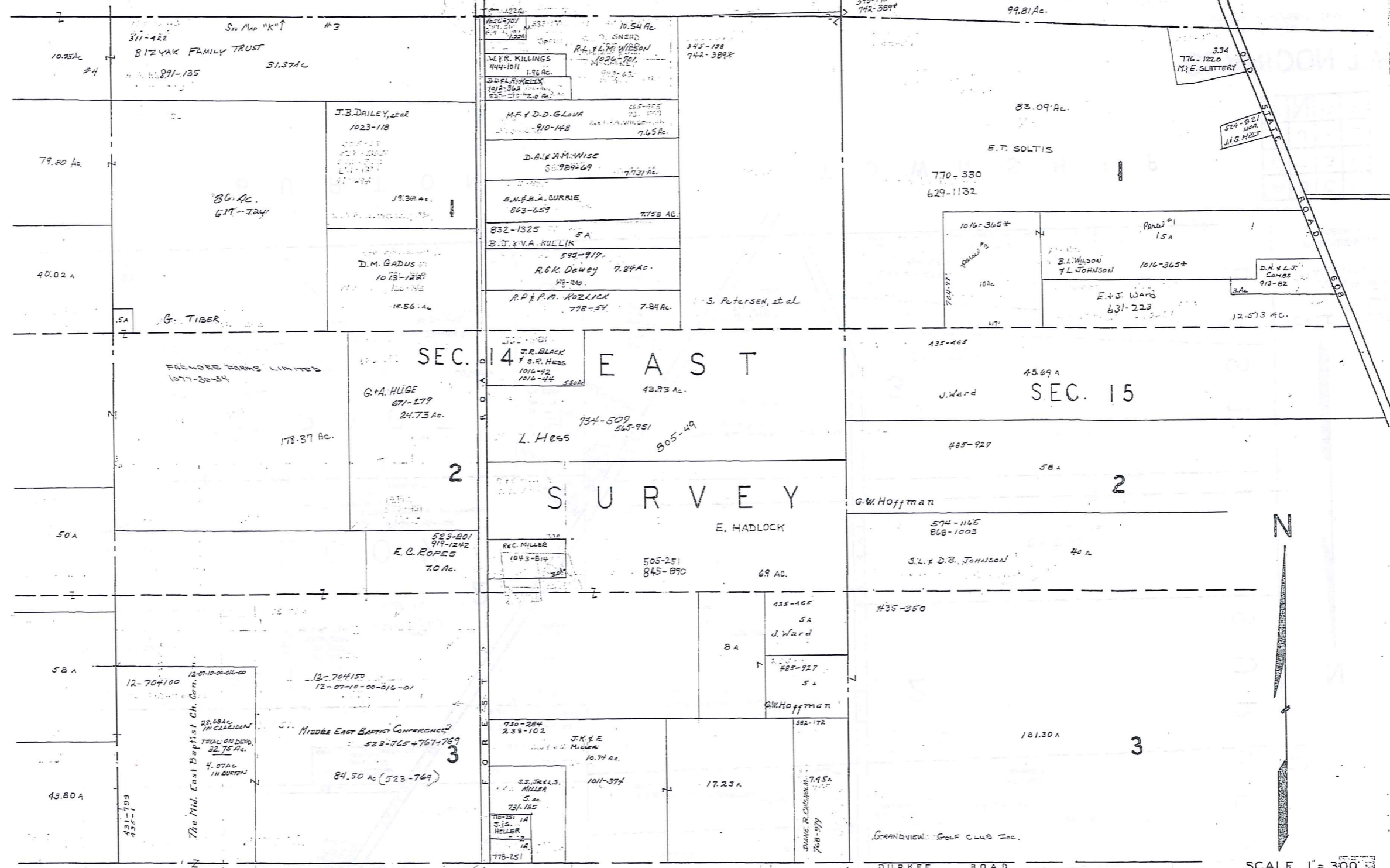
TOWNSHIP

A	B	C	D
E	F	G	H
I	J	K	L
M	N	O	P

CLARIDON TWP.

JANUARY 1, 1997  
RELATIVE REPRESENTATION

TRM-REDI  
 1-800-345-7334  
 SCALE IN 1/4 IN OR ANCHOR



TRIM-REDI  
 1-800-345-7334  
 SCALE IN VARIOUS INCHES

240

SCALE 1" = 300'

\* Inadequate description  
 ✓ Indicates survey on file with taxmap dept.

A	B	C	D
E	F	G	H
I	J	K	L
M	N	O	P

**CLARIDON TWP.**  
 JANUARY 1, 1987  
 RELATIVE REPRESENTATION



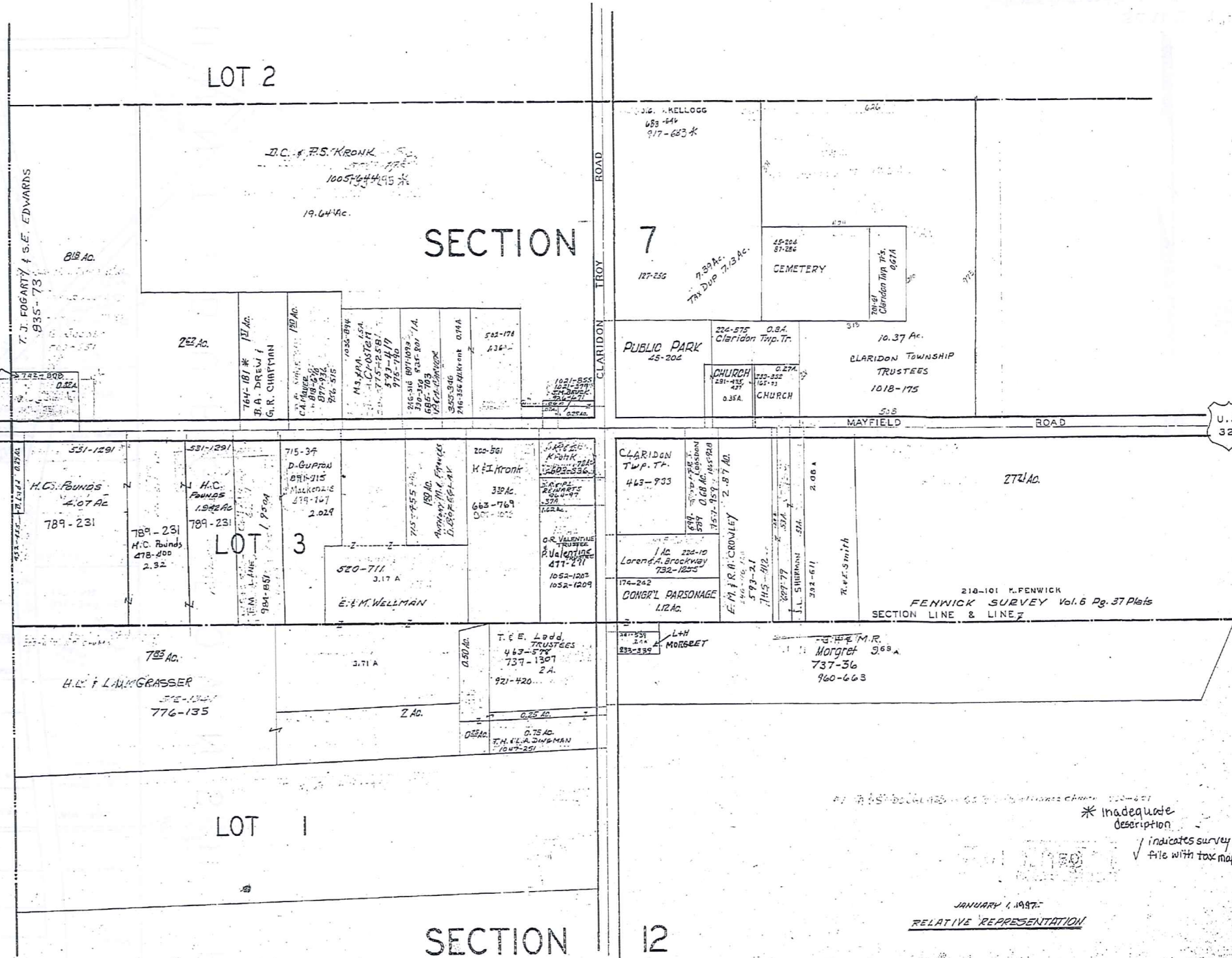
# CLARIDON T.P. [CENTER]

SCALE 1 IN. = 2.5 CH. = 165 FT.

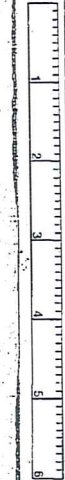
JAN 1, 1982

U.S. 322

U.S. 322



T.M. & H.D. 1-800-345-7334



SCALE IN FEET OR INCHES

242

\* Inadequate description  
 indicates survey on file with tax map dept.

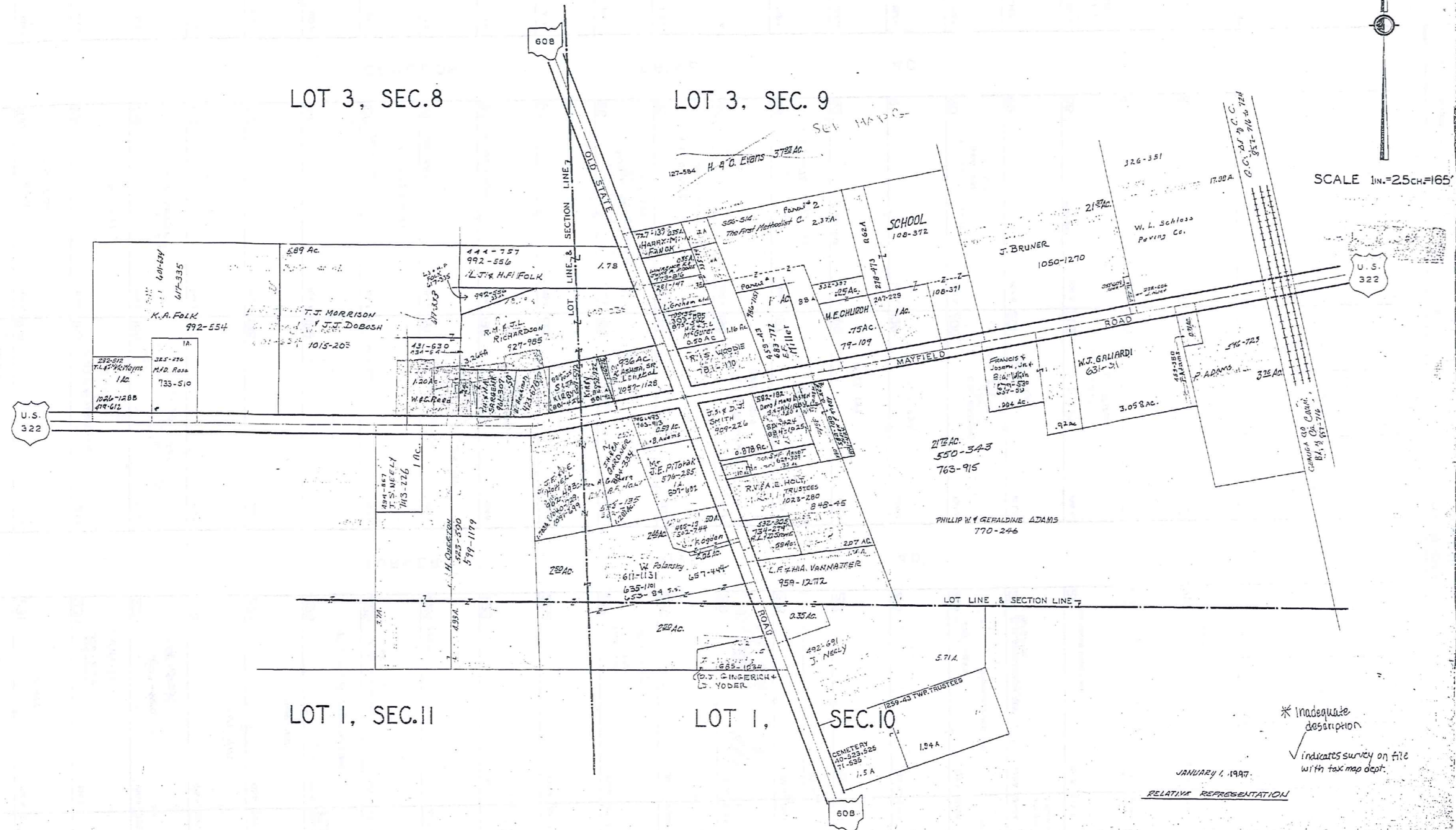
JANUARY 1, 1982  
 RELATIVE REPRESENTATION

6-Q

EAST CLARIDON  
AND VICINITY

# CLARIDON TP.

EAST CLARIDON  
AND VICINITY



TRW & REED  
 1-800-345-7334  
 SCALE IN. = 25 CH. = 165'  
 U.S. 322  
 243  
 SCALE IN. 1/10 OF AN INCH

\* Inadequate description  
 ✓ Indicates survey on file with tax map dept.  
 JANUARY 1, 1997  
 RELATIVE REPRESENTATION

SCALE 1" = 30 FT.

57	103-103	U. PIERCE	.104A
58	103-103	M. Koszewski	.106A
59	103-103	U. PIERCE	.104A
60	103-103	J.B. & L. CHAPARD	.103A
61	103-103	M. Koszewski	.103A
62	103-103	992-229	.103A
63	103-103	992-229	.103A
64	103-103	G.F. Davis	.103A
65	103-103	949-742	.103A
66	103-103	J.J. ZEMETA ETAL	.103A
67	103-103	L.D. ZERBIAN	.103A
68	103-103	R.P. FLEUKENSTEIN	.103A
69	103-103	932-390	.103A
70	103-103	932-390	.102A
71	103-103	R.L. & A.L. MEZAK	.102A
72	103-103	971-345	.102A
73	103-103	THE REV. NICHOLAS MERSWEP CHURCH	.102A
74	103-103	987-494	.102A
75	103-103	495-923 U. Blasko	.102A
76	103-103	102-600 H.G. & H.M. HECKER	.102A
77	103-103	631-1102 L. Shea & F.R. R. Gaumpartner	.102A
78	103-103	M.D. HORBAY	.102A
79	103-103	1081-388	.102A
80	103-103	D.A. LOFTUS	.092A
81	103-103	J.L. DeGUIGERT	.092A
82	103-103	M.D. HORBAY	.103A

108	101A	SEE 6-S-CTR.	.104A
107	101A	E. J. DEERY	.104A
106	101A	A. DEERY	.104A
105	101A	E. BEIRNIS	.104A
104	101A	763-1051	.104A
103	101A	763-644	.104A
102	101A	763-644	.104A
101	101A	763-644	.104A
100	101A	763-644	.104A
99	101A	763-644	.104A
98	101A	763-644	.104A
97	101A	763-644	.104A
96	101A	763-644	.104A
95	101A	763-644	.104A
94	101A	763-644	.104A
93	101A	763-644	.104A
92	101A	763-644	.104A
91	101A	763-644	.104A
90	101A	763-644	.104A
89	101A	763-644	.104A
88	101A	763-644	.104A
87	101A	763-644	.104A
86	101A	763-644	.104A
85	101A	763-644	.104A
84	101A	763-644	.104A
83	101A	763-644	.104A
82	101A	763-644	.104A
81	101A	763-644	.104A
80	101A	763-644	.104A
79	101A	763-644	.104A
78	101A	763-644	.104A
77	101A	763-644	.104A
76	101A	763-644	.104A
75	101A	763-644	.104A
74	101A	763-644	.104A
73	101A	763-644	.104A
72	101A	763-644	.104A
71	101A	763-644	.104A
70	101A	763-644	.104A
69	101A	763-644	.104A
68	101A	763-644	.104A
67	101A	763-644	.104A
66	101A	763-644	.104A
65	101A	763-644	.104A
64	101A	763-644	.104A
63	101A	763-644	.104A
62	101A	763-644	.104A
61	101A	763-644	.104A
60	101A	763-644	.104A
59	101A	763-644	.104A
58	101A	763-644	.104A
57	101A	763-644	.104A

233	107A	1070-1193	.107A
232	107A	1070-1193	.107A
231	106A	1060-1193	.106A
230	106A	1060-1193	.106A
229	106A	1060-1193	.106A
228	105A	1050-1193	.105A
227	105A	1050-1193	.105A
226	105A	1050-1193	.105A
225	105A	1050-1193	.105A
224	104A	1040-1193	.104A
223	104A	1040-1193	.104A
222	104A	1040-1193	.104A
221	104A	1040-1193	.104A
220	103A	1030-1193	.103A
219	103A	1030-1193	.103A
218	103A	1030-1193	.103A
217	103A	1030-1193	.103A
216	102A	1020-1193	.102A
215	102A	1020-1193	.102A
214	102A	1020-1193	.102A
213	101A	1010-1193	.101A
212	101A	1010-1193	.101A
211	101A	1010-1193	.101A
210	100A	1000-1193	.100A
209	100A	1000-1193	.100A
208	100A	1000-1193	.100A
207	100A	1000-1193	.100A
206	100A	1000-1193	.100A
205	100A	1000-1193	.100A
204	100A	1000-1193	.100A
203	100A	1000-1193	.100A
202	100A	1000-1193	.100A
201	100A	1000-1193	.100A
200	100A	1000-1193	.100A
199	100A	1000-1193	.100A
198	100A	1000-1193	.100A
197	100A	1000-1193	.100A
196	100A	1000-1193	.100A
195	100A	1000-1193	.100A
194	100A	1000-1193	.100A
193	100A	1000-1193	.100A
192	100A	1000-1193	.100A
191	100A	1000-1193	.100A
190	100A	1000-1193	.100A
189	100A	1000-1193	.100A
188	100A	1000-1193	.100A
187	100A	1000-1193	.100A
186	100A	1000-1193	.100A
185	100A	1000-1193	.100A
184	100A	1000-1193	.100A
183	100A	1000-1193	.100A
182	100A	1000-1193	.100A
181	100A	1000-1193	.100A
180	100A	1000-1193	.100A
179	100A	1000-1193	.100A
178	100A	1000-1193	.100A
177	100A	1000-1193	.100A
176	100A	1000-1193	.100A
175	100A	1000-1193	.100A
174	100A	1000-1193	.100A
173	100A	1000-1193	.100A
172	100A	1000-1193	.100A
171	100A	1000-1193	.100A
170	100A	1000-1193	.100A
169	100A	1000-1193	.100A
168	100A	1000-1193	.100A
167	100A	1000-1193	.100A
166	100A	1000-1193	.100A
165	100A	1000-1193	.100A
164	100A	1000-1193	.100A
163	100A	1000-1193	.100A
162	100A	1000-1193	.100A
161	100A	1000-1193	.100A
160	100A	1000-1193	.100A
159	100A	1000-1193	.100A
158	100A	1000-1193	.100A
157	100A	1000-1193	.100A
156	100A	1000-1193	.100A
155	100A	1000-1193	.100A
154	100A	1000-1193	.100A
153	100A	1000-1193	.100A
152	100A	1000-1193	.100A
151	100A	1000-1193	.100A
150	100A	1000-1193	.100A

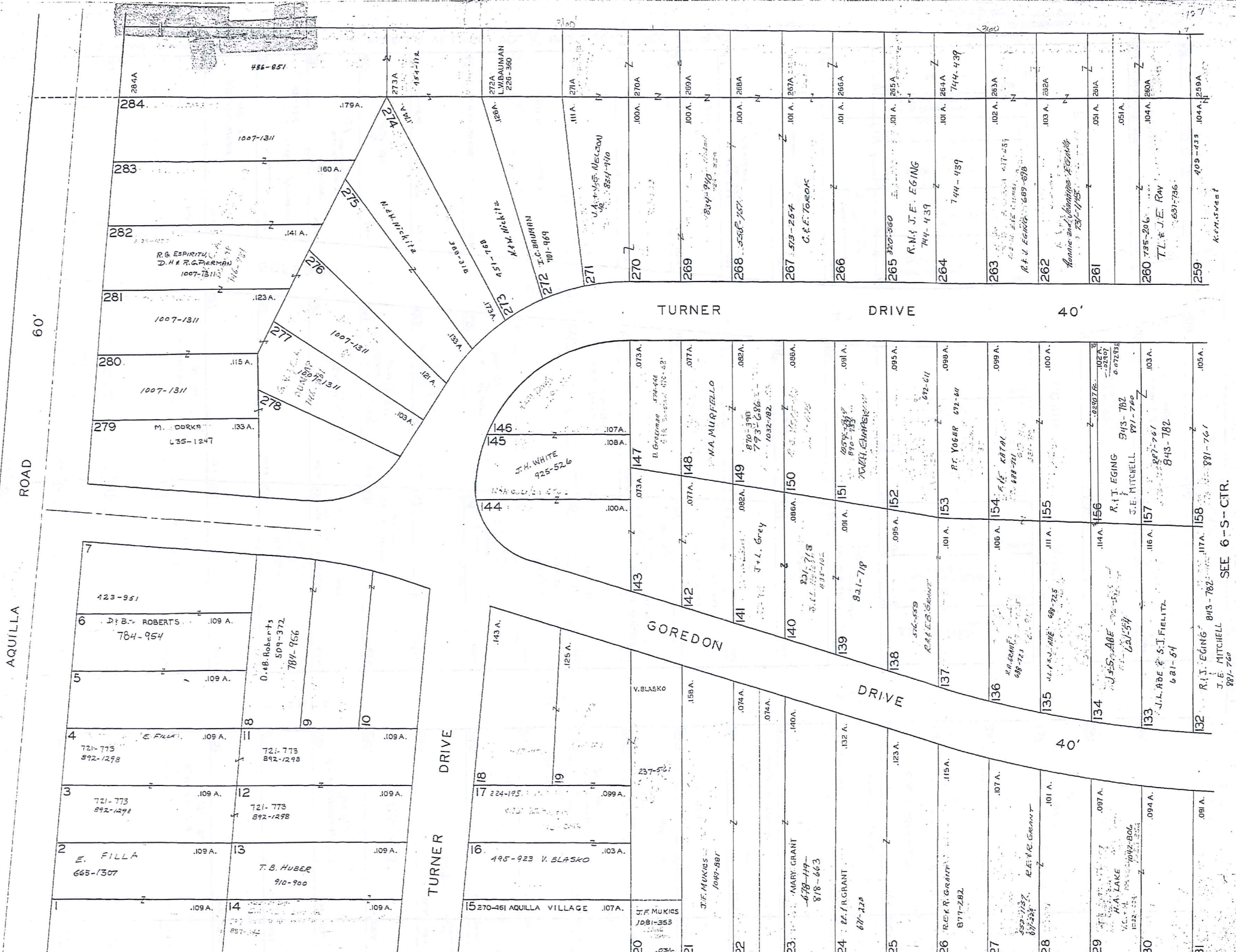
TURNER DRIVE 40'

GOREDON DRIVE 40'

1-800-345-7334 TRU-BEDI BOULEVARD AQUILLA

SCALE IN 1/160 OF AN INCH

SCALE 1"=30 FT.



LAKE AQUILLA SUBDIVISION NO. 1 & LAKE AQUILLA SUBDIVISION NO. 1 ADDITION  
 VOL. 1 PGS 50 & 51 REC OF PLATS VOL. 4 PGS 23 & 24 REC OF PLATS

NOW

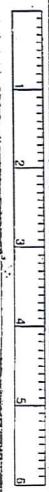
AQUILLA VILLAGE VOL. 4, PAGES 26-27 REC. OF PLATS

JANUARY 1, 1987 - RELATIVE REPRESENTATION

Indicates Survey on file with tax map dept. \* Inadequate description

6-S WEST

TRW-REDI  
1-800-345-7334



SCALE IN 1/10 OF AN INCH



AQUILLA VILLAGE VOL. 4, PAGES 26-27 REC. OF PLATS  
 FORMERLY  
 LAKE AQUILLA ESTATES COMPANY'S SUBDIVISION NO. 1

AND RESUBDIVISION OF BLOCKS I & J AND SUBLOTS  
 NOS. 125 TO 141 INCLUSIVE IN BLOCK D

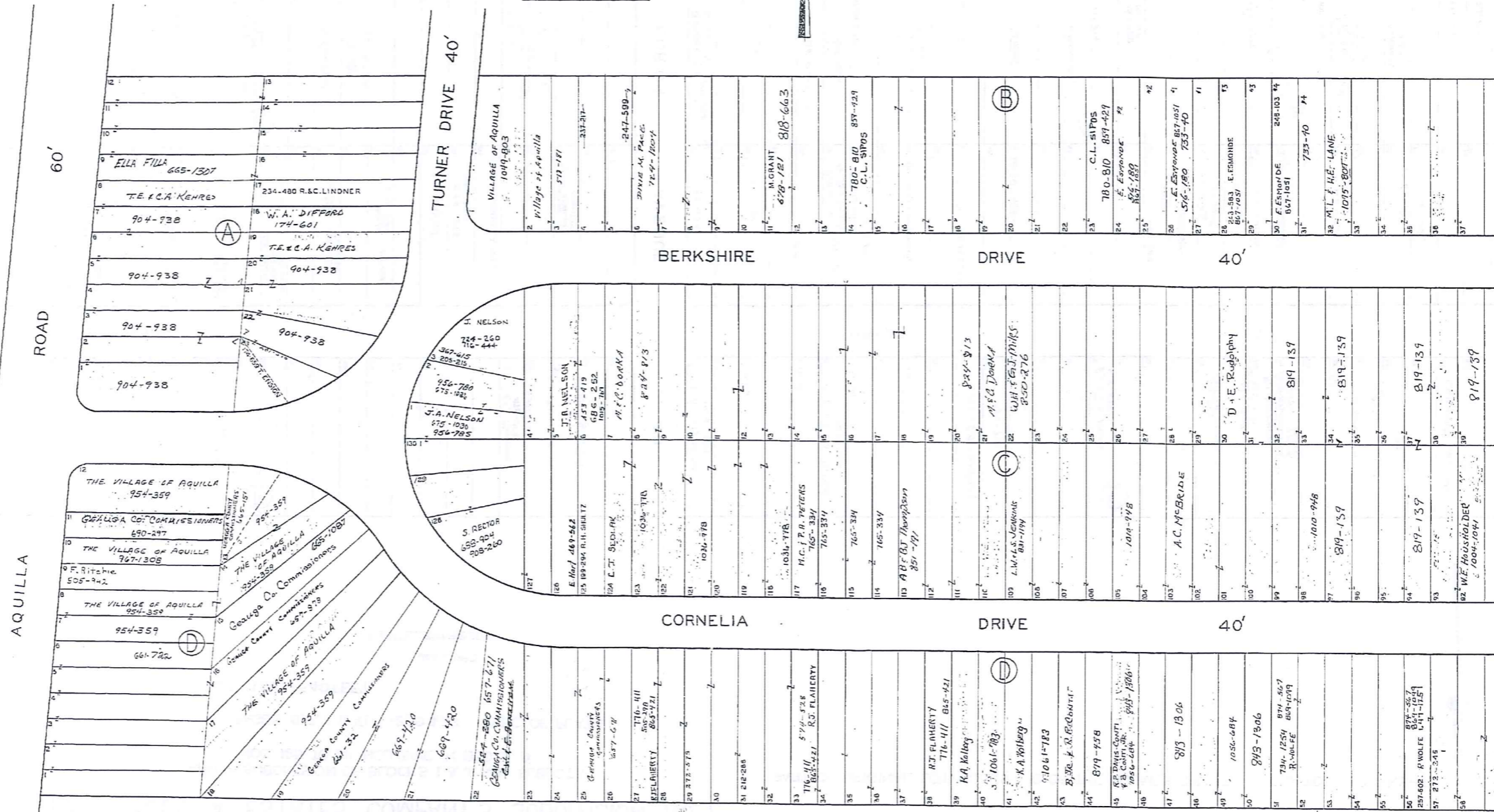
VOL. 2 PAGES 6, 7, 8, 9, 10, 11, 12, 19 & 33 REC. OF PLATS

SCALE 1 INCH = 40 FEET

PART OF ORIGINAL LOT NOS. 9 & 10 OF THE HOLMES TRACT CLARIDON TOWNSHIP

JAN. 1, 1997

RELATIVE REPRESENTATION



TRU-REDI  
 1-800-345-7334  
 SCALE IN 1/10 OF AN INCH

SEE 6-T-2

✓ indicates survey on file with tax map dept. \* inadequate description

AQUILLA VILLAGE VOL. 4, PAGES 26-27 REC. OF PLATS  
FORMERLY  
LAKE AQUILLA ESTATES COMPANY'S SUBDIVISION NO. 1

AND RESUBDIVISION OF BLOCKS I & J AND SUBLOTS  
NOS. 125 TO 141 INCLUSIVE IN BLOCK D

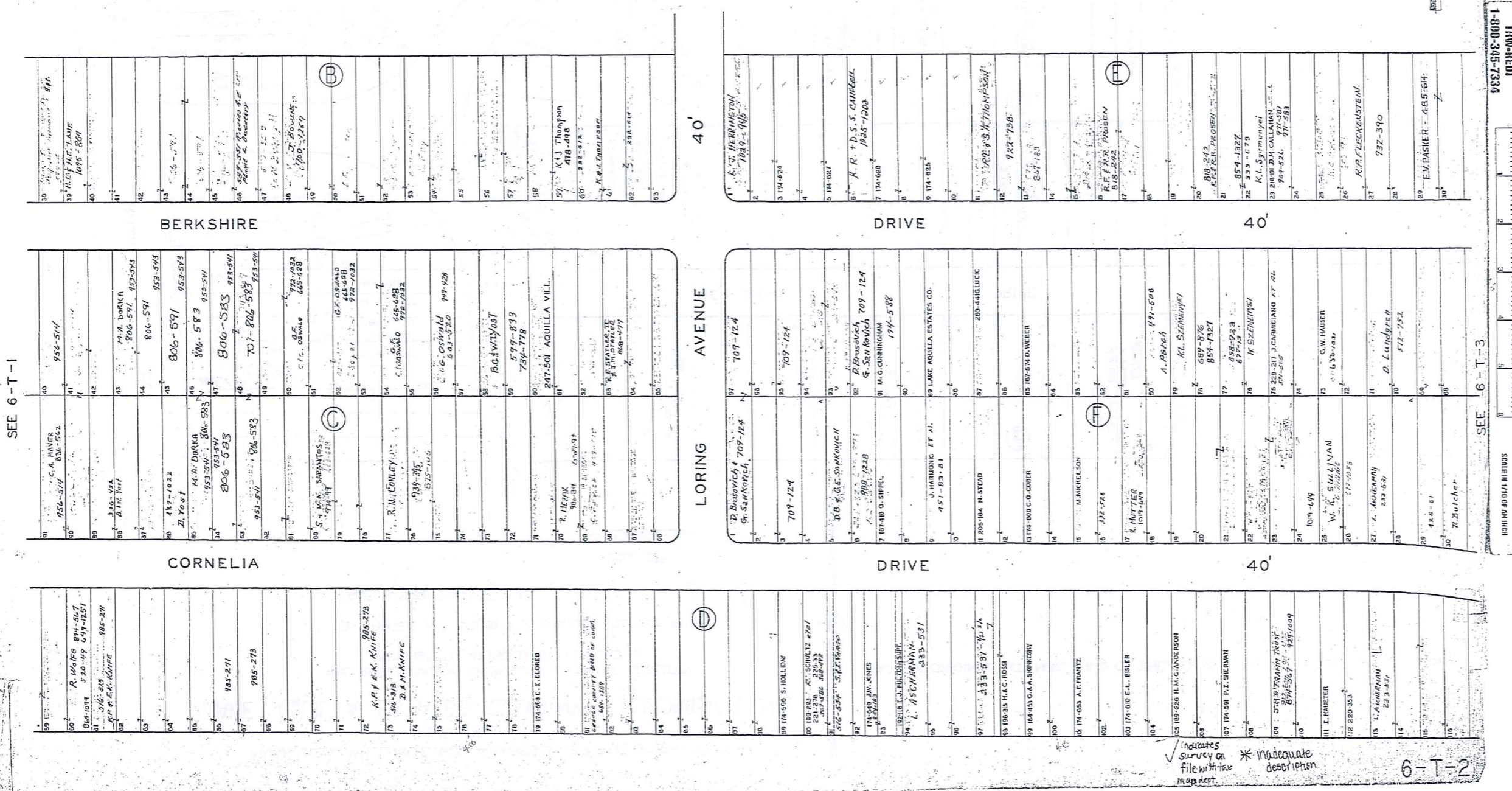
PART OF ORIGINAL LOT NOS. 9 & 10 OF THE HOLMES TRACT CLARIDON TOWNSHIP

VOL. 2 PAGES 6, 7, 8, 9, 10, 11, 12, 19 & 33 REC. OF PLATS

SCALE 1 INCH = 40 FEET

JAN. 1, 1997

RELATIVE REPRESENTATION



SEE 6-T-1

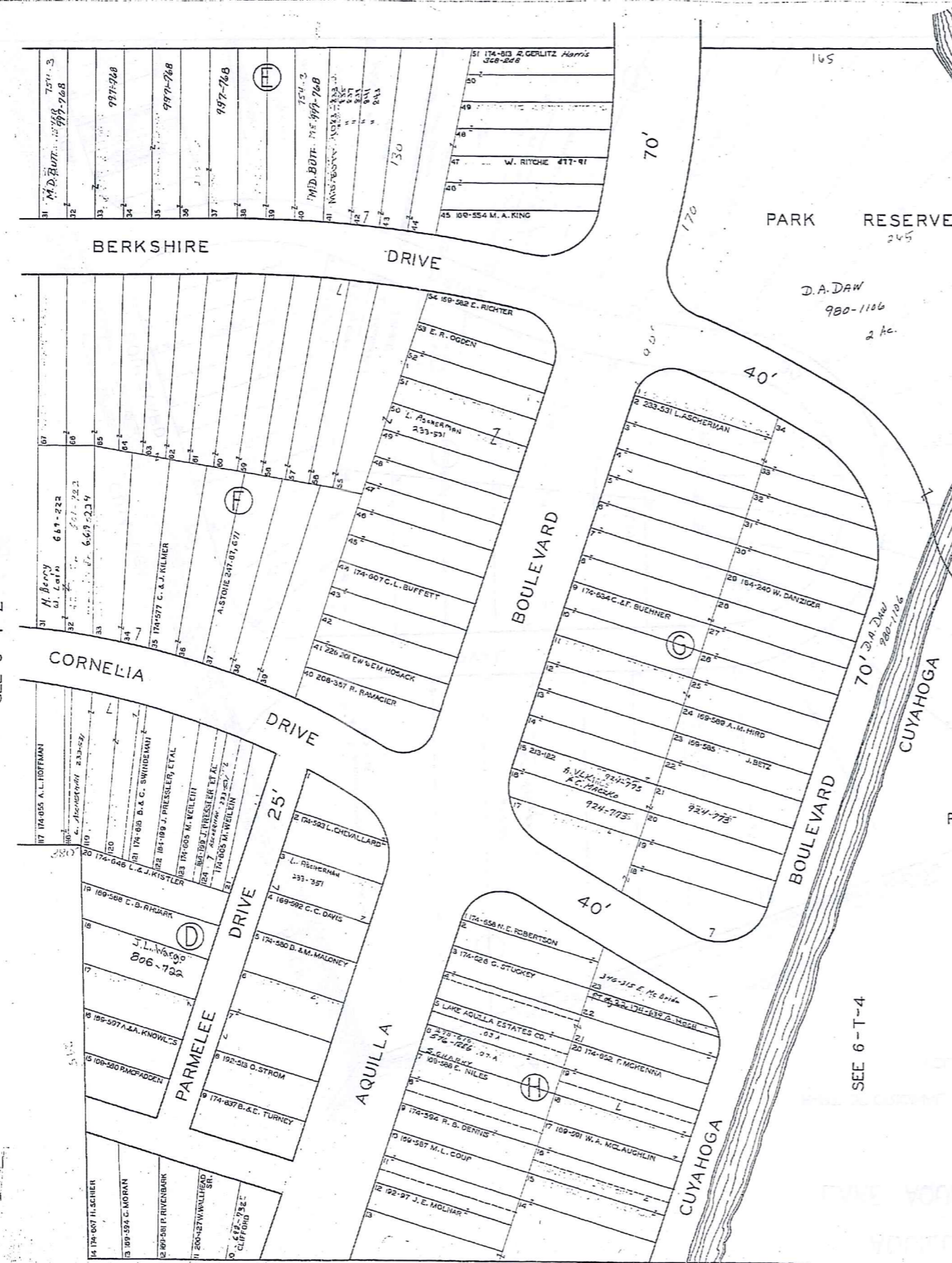
SEE 6-T-3

\* inadequate survey on file with tax map dept.

6-T-2

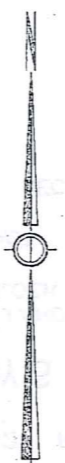
1-800-345-7334  
SCALE IN 1/4000' AS SHOWN

SEE 6-T-2



AQUILLA VILLAGE VOL. 4 PAGES 26-27 REC. OF PLATS  
 FORMERLY  
 LAKE AQUILLA ESTATES COMPANY'S SUBDIVISION NO. 1  
 AND RESUBDIVISION OF BLOCKS I & J AND SUBLOTS  
 NOS. 125 TO 141 INCLUSIVE IN BLOCK D  
 PART OF ORIGINAL LOT NOS. 9 & 10 OF THE HOLMES TRACT CLARIDON TOWNSHIP  
 VOL. 2 PAGES 6, 7, 8, 9, 10, 11, 12, 19 & 33 REC. OF PLATS  
 SCALE 1 INCH = 40 FEET

JAN 1, 1997  
 RELATIVE REPRESENTATION



\* Inadequate description  
 ✓ Indicates survey on file with tax map dept.

TRW-REDI  
 1-800-345-7334  
 SCALE IN 1/10 OF AN INCH

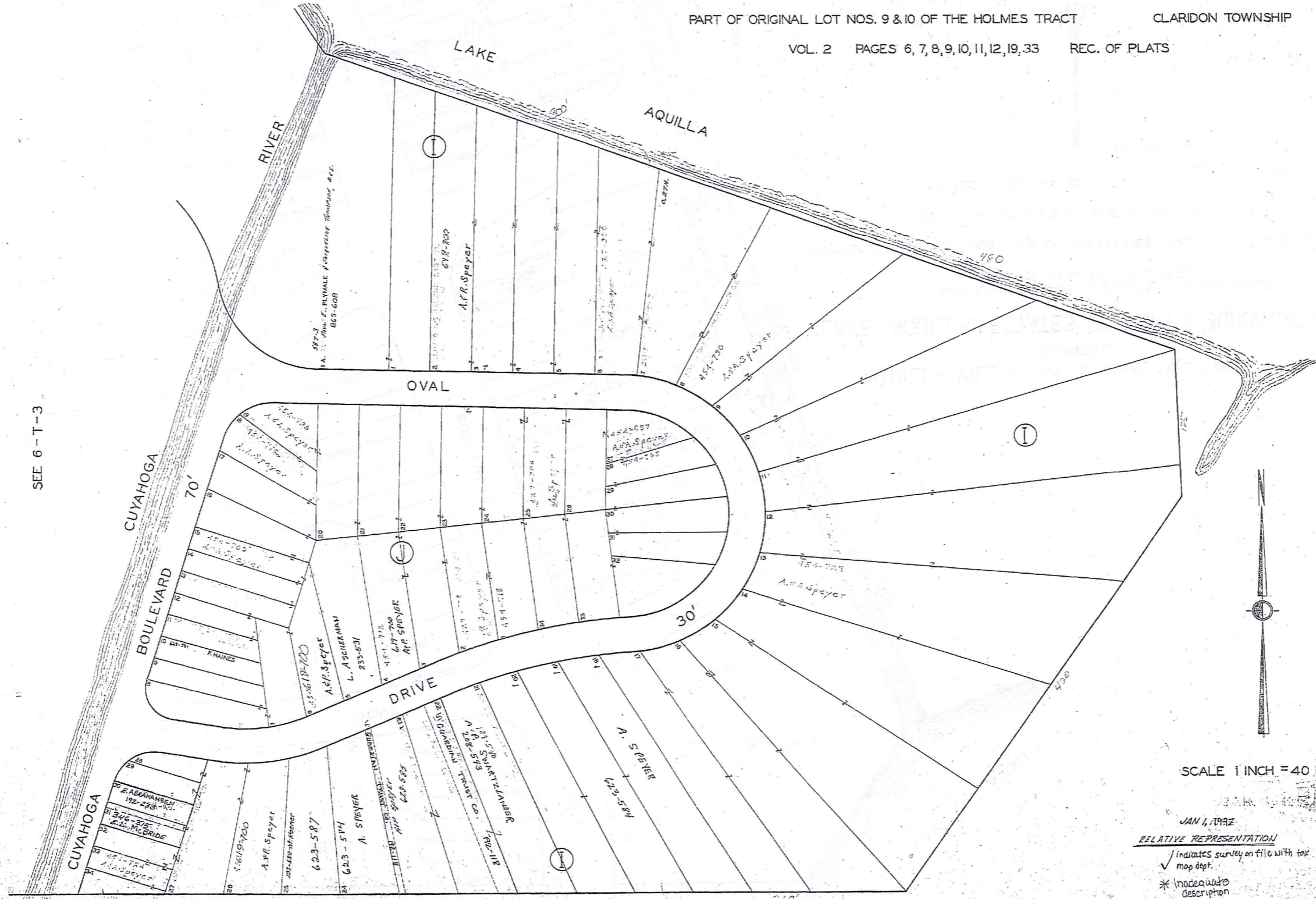
AQUILLA VILLAGE VOL. 4 PAGES 26-27 REC. OF PLATS  
 FORMERLY  
 LAKE AQUILLA ESTATES COMPANY'S SUBDIVISION NO. 1

AND RESUBDIVISION OF BLOCKS I & J AND SUBLOTS  
 NOS. 125 TO 141 INCLUSIVE IN BLOCK D

PART OF ORIGINAL LOT NOS. 9 & 10 OF THE HOLMES TRACT CLARIDON TOWNSHIP

VOL. 2 PAGES 6, 7, 8, 9, 10, 11, 12, 19, 33 REC. OF PLATS

SEE 6-T-3



TRIM-REDI  
 1-800-345-7334  
 SCALE IN 1/10 OF AN INCH

250

SCALE 1 INCH = 40 FEET

JAN 1, 1992

RELATIVE REPRESENTATION

✓ indicates survey on file with tax map dept.

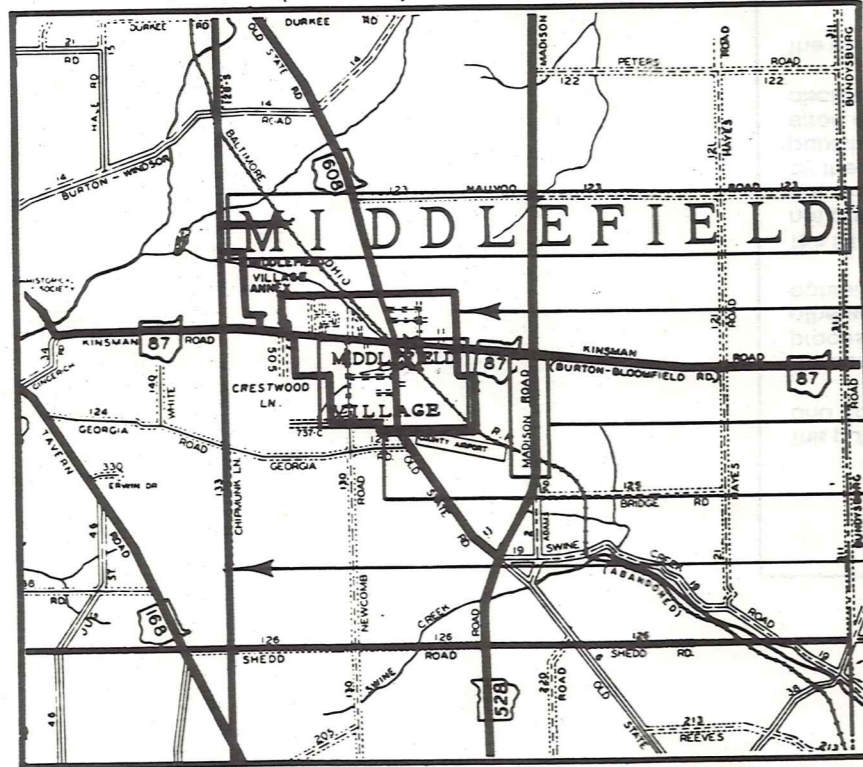
\* Indicates description

6-T-4

# Explanation and Use Sheet for Geauga County, Ohio

A

SAMPLE (PARTIAL) COUNTY INDEX MAP



Tract Lot Number

Acreage

Township Name

Village Boundary

Street Name

Village Name

Township Boundary

Owners Name

Denotes Continuous Ownership

Deed Book & Page

Map Page Number

Township Name

Village Name

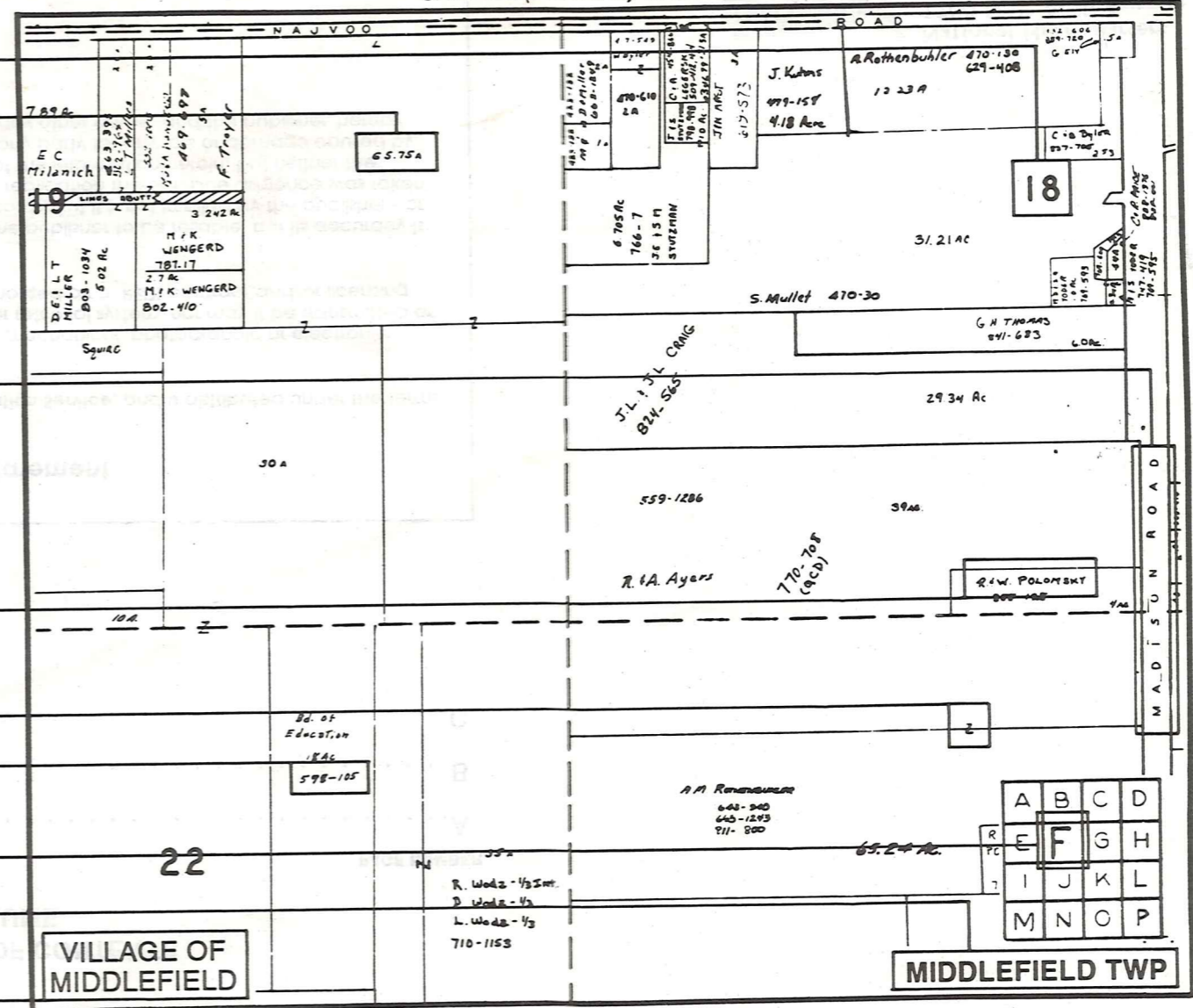
Village Boundary

Street Name

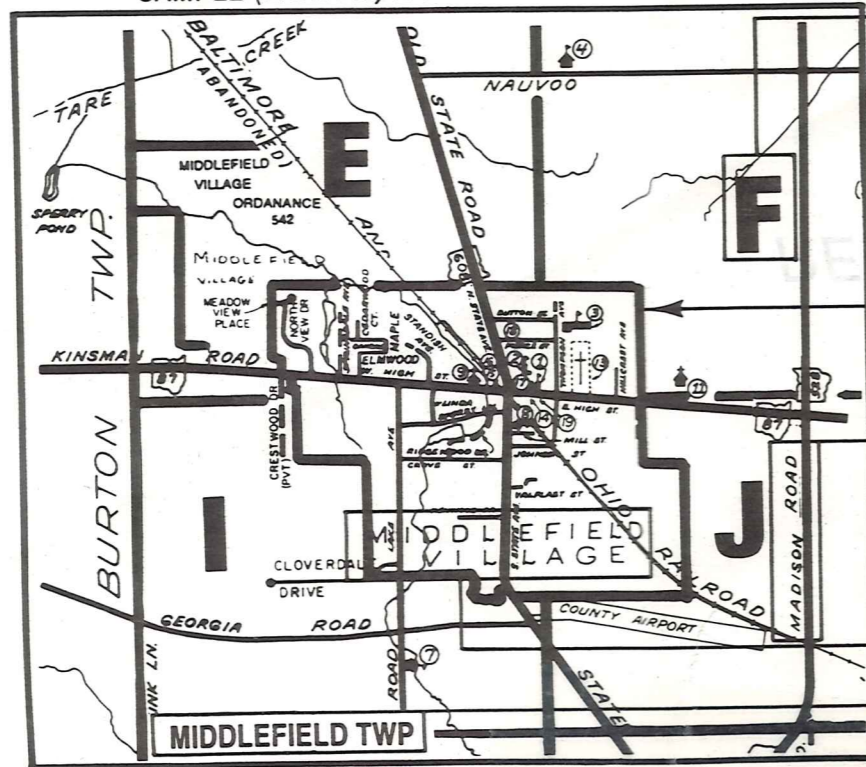
Village Name

Township Name

SAMPLE (PARTIAL) MAP PAGE



SAMPLE (PARTIAL) MUNICIPALITY INDEX MAP



## USE OF THE MAP VOLUME

- LOCATE THE GENERAL AREA OF INTEREST ON THE COUNTY INDEX MAP AND NOTE THE MUNICIPALITY NAME (TOWNSHIP OR VILLAGE).
  - REFER TO THE TABLE OF CONTENTS AND NOTE THE BEGINNING ATLAS PAGE NUMBER FOR THE MUNICIPALITY OF INTEREST.
  - TURN TO THE PAGE INDICATED, ON THIS PAGE WILL APPEAR AN INDEX MAP FOR THAT MUNICIPALITY.
  - LOCATE THE GENERAL AREA OF INTEREST AND NOTE THE MAP PAGE NUMBER. THIS MAY BE EITHER A LETTER OR A NUMBER.
  - MAP PAGES ARE IN ALPHABETICAL (OR NUMERICAL) SEQUENCE FOLLOWING THE MUNICIPALITY INDEX MAP. FOLLOW SEQUENCE TO THE MAP PAGE INDICATED.
  - LOCATE SPECIFIC PARCEL OF INTEREST AND NOTE THE DESIRED INFORMATION.
- NOTE: ON SOME MAPS YOU MAY BE REFERRED TO A DETAIL SHEET SHOWING AN ENLARGEMENT OF THE AREA. THESE MAPS ARE FOUND AT THE END OF THE REGULAR MAP PAGES IN EACH MUNICIPALITY IN EITHER ALPHABETICAL OR NUMERICAL SEQUENCE.
- NOTE: CHARDON VILLAGE HAS TITLE SHEETS. TO LOCATE OWNERS NAME, NOTE THE PARCEL NUMBER, REFER TO THE TITLE PAGE FOLLOWING THE MAP OF INTEREST, FOLLOW NUMERICAL SEQUENCE TO THE PARCEL NUMBER OF INTEREST AND NOTE THE DESIRED INFORMATION. IN ALL OTHER MUNICIPALITIES THE OWNERS NAME APPEARS ON THE MAP PAGE.